

Absorbor™



Main St, Grangecon, Co. Wicklow
Tel: 045 403909
Mob: 087 9113326
Email: info@acousticgrg.ie
Web: www.acousticgrg.ie

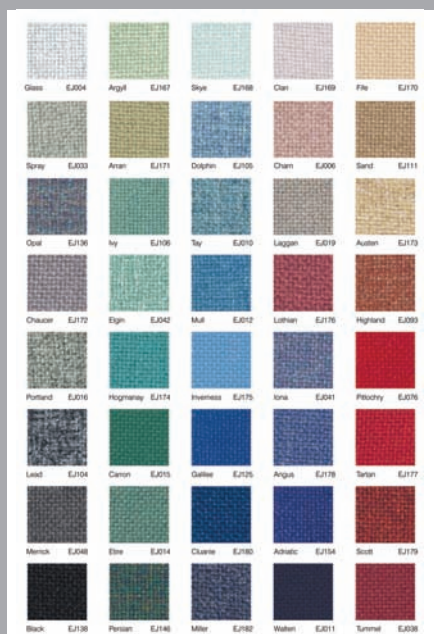
ACOUSTIC GRG
IRELAND LIMITED

The art of noise control

Walls

Sound can either be absorbed, reflected or diffused. In many rooms, flat reflective surfaces can cause interfering reflections and excessive reverberation, which can corrupt music quality, speech intelligibility, and comfort. One approach to controlling the reflections and excess reverberation is to utilize absorptive panels, which consist of a porous absorbing core, typically fiberglass, mineral wool, or foam, covered with fabric, perforated vinyl, or newer paintable and breathable glass textile coverings. RPG Diffusor Systems, Inc. has developed a simple and reliable method of attachment, which offers fixed or removable installation, utilizing the Impalet™ clip.

Traditional fabric wrapped panels from the industry's leading acoustical innovator.



Please ask to see our full range of fabric options

To Ceilings: Clouds & Cubes

Absorber Clouds or Cubes available in different sizes, shapes and colours to suit all your architectural requirements



Problem and Solution

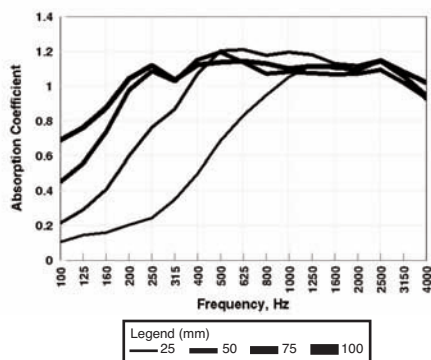
Problem

Absorptive panels are used extensively in acoustical designs to control room reflections and reverberation. Workmanship and ease of mounting are often a problem.

Solution

RPG offers complete custom panel fabrication with a novel mounting ImpaleIt™ clip that provides a simple and reliable fixed or removable mounting, using the ImpaleIt clip.

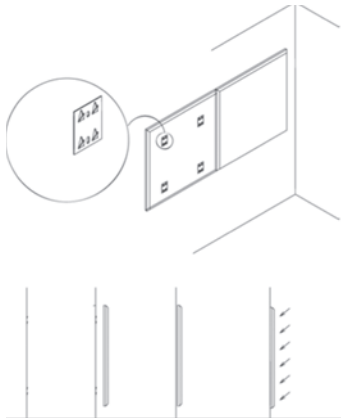
Performance Specifications



Absorption

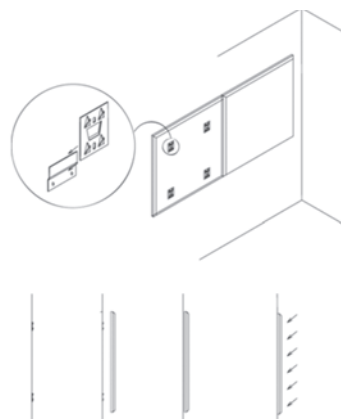
The graph shows the typical increase in absorption efficiency as a function of thickness for an A (surface) mounting. Additional low frequency absorption can be obtained by mounting the panel away from the boundary surface.

Installation



Fixed Surface Mount

Simply secure the ImpaleIt™ clip to a surface, with screws or with a hook and loop fastener. Make a mark at the desired height of the panel and 1" above that for alignment. Line up the panel with the higher mark and gently pierce the back of the panel with the triangular prongs. Then press firmly into the ImpaleIt™ clip and press downward until the panel reaches the desired height.



Removable Surface Mount

It is often desirable to be able to remove a panel. To do so, simply attach a "Z" channel to the surface and hang the ImpaleIt™ clip on the channel. Make a mark at the desired height and 1" above that for alignment. Align the panel at the mark 1" above the desired height and gently pierce the back of the panel with the triangular prongs. Then firmly press the panel into the ImpaleIt™ clip, allowing it to pierce the rear of the panel and push downward to the desired height.

Features

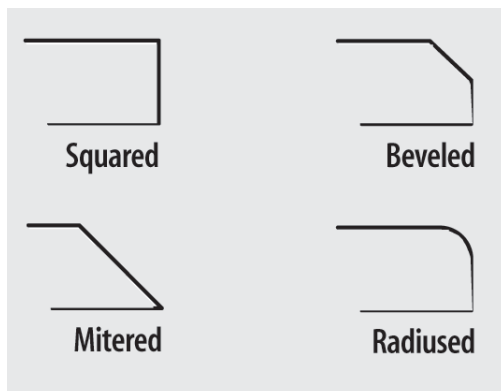
- Efficient absorption
- Custom sizes
- Standard or Custom fabrics
- Paintable fabrics
- Any edge termination condition
- Ease of installation

Benefits

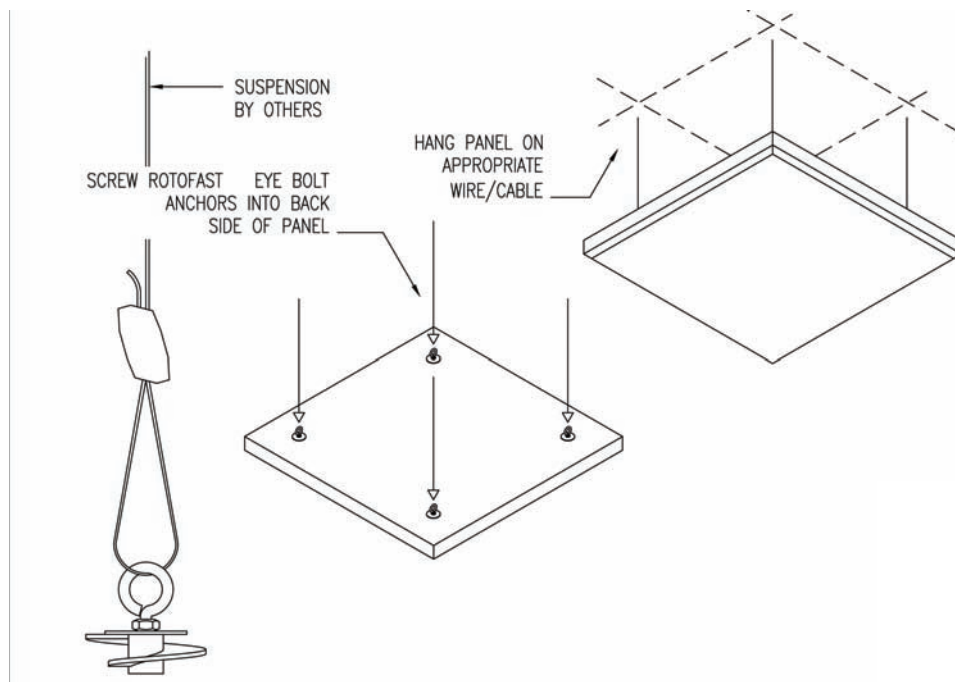
- The RPG Absorbor provides efficient absorption and can be mounted away from the mounting surface for improved low frequency absorption
- RPG offers custom fabrication in any size and thickness
- Any standard Guilford or custom fabric that has sufficient transparency can be used
- New paintable fabrics are also offered
- RPG's CNC capability allows any edge termination condition, as well as cutouts
- Installation is easy with RPG's ImpaleIt fixed or removable Z clip.

Applications

Conference and teleconference rooms, Lecture Halls, Distance Learning Rooms, Public spaces, Listening rooms, Recording and broadcast studios, Post production studios, Home theaters, Rehearsal rooms, Auditoriums, Performance spaces



Hanging



Utilising Rotofast Anchors simply hang your cloud or cube with 1.5mm stainless steel rope & a ziplock adjustor to achieve the correct height.

Panel size will determine correct number of rotofast anchors & wires.

Nominally

4no per panel
<1200mm x1200mm

6No per panel
>1200mmx1200mm

Guide Specification

General

1. All Absorbor panels should be installed in accordance with the manufacturer's recommendations
2. All necessary hardware and accessories to be included.
3. Installation of panels should not commence till wet trades are complete and building is operating at normal temperature.
4. The contractor is responsible for the examination of product prior to installation.

Product

1. Install Absorbor™ utilising the manufacturers recommended number of clips/eyes
2. The Absorbor™ Panels size are to bemm long xmm wide in shape
3. Finish: The Absorbor Panel fabric is to be..... by

Supplier

Acoustic GRG Products Ltd, 218 Dover Rd. Folkestone, Kent, CT19 6NJ.
Tel: +44 1303230944 Email info@rpgeurope.com Web www.rpgeurope.com