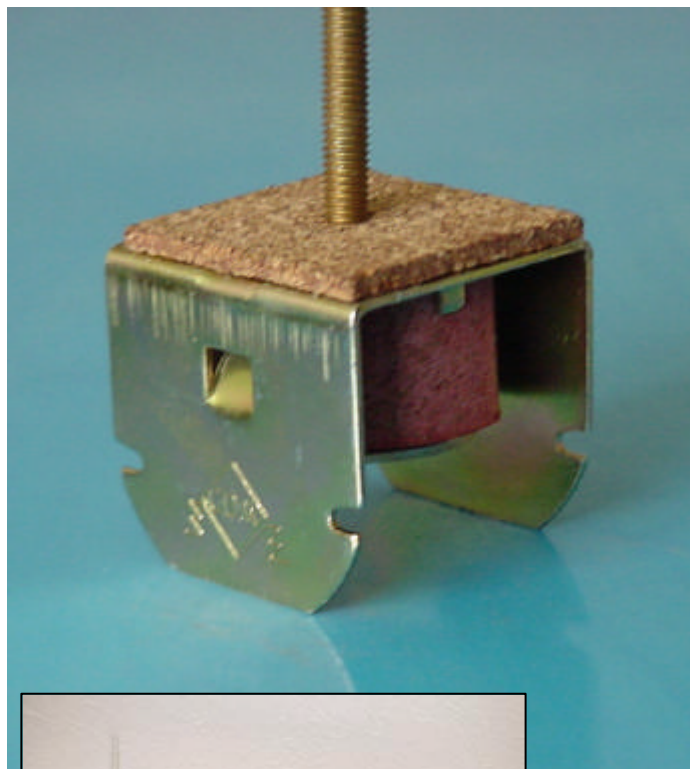


CDM-ISO-CC



Sound Insulation for Ceilings Resilient Hanger Clip System

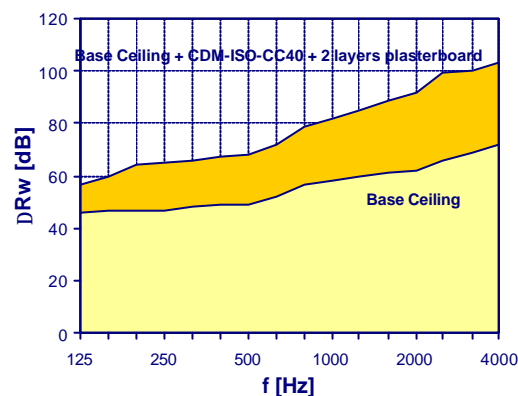


The **CDM-ISO-CC Acoustic Suspension System** is designed to optimise the sound insulation of suspended ceilings.

The system comprises of the **CDM-ISO-CC** hanger + the **CDM-PROFILAT** rail (either 45mm or 60mm wide) that clips into the hanger. There are 2 types available:

- **CDM-ISO-CC40** with the **CDM-PROFILAT40** rail
- **CDM-ISO-CC60** with the **CDM-PROFILAT60** rail

f_{res} [Hz]	Type	Optimal Load per element [N]
11–12 Hz	CDM-ISO-CC40L	150 (100-200)
	CDM-ISO-CC40H	350 (200-550)
	CDM-ISO-CC60L	150 (100-200)



◀ Installation

With **CDM-ISO-CC** suspension elements, **sound insulation improvements of more than 20 dB** can be achieved.

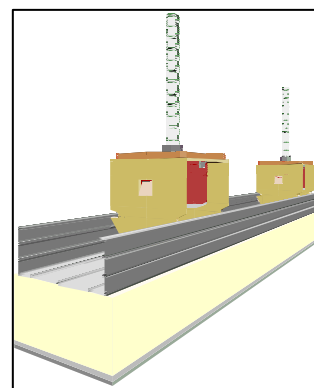
Installation Guidelines

The hangers are mechanically fixed to the ceiling and then the **CDM-PROFILAT** rail is snap fitted into the hangers. Plasterboard can then be fixed into the rails.

The minimum air void possible with this system is 45mm.

CDM-ISO-CC hangers must only be used with the **CDM-PROFILAT** rails (45mm/60mm) to ensure structural stability of the ceiling.

CDM-ISO-PERIMETERSTRIP must be used to isolate the suspended ceiling from surrounding walls to avoid undermining the acoustic integrity of the ceiling.



CDM-ISO-CEILING

CDM-UK
PO Box 7035
Melton Mowbray
Leics LE13 1WG



noise & vibration control

T: + 44 (0) 1664 482486
F: +44 (0) 1664 482487
E: info@cdm-uk.co.uk
www.cdm-uk.co.uk