

Product information

Blazer Lite is a finer version of our Blazer upholstery fabric making it lighter in weight for use on desk screens, panels and other vertical surfaces. The felted, milled finish sports a colour palette consisting of melange mixes, subtle pastels and iridescent brights.

Contact	
UK Head Office:	+44 (0)1924 490491
Germany:	+49 7031 60 84 30
Scandinavia:	+45 32 55 20 01
France/Benelux:	+32 56 227 266
USA:	+1 616 288 0655
China:	+ 86 (0) 21 6133 1812

www.camirafabrics.com



Technical information

UK

Composition

100% Virgin Wool.
Non metallic dyestuffs

Environmental

Rapidly renewable and compostable.

Width

170cm minimum

Weight

355g/m2 ±5% (605g/lin.m ±5%)

Flammability

BS 476 Part 7 Class 1
BS 476 Part 6 Class 0

Note: Flammability performance is dependent on components used.

Light Fastness

5 (ISO 105 - B02:2014)

Fastness to Rubbing

Wet: 4, Dry: 4 (ISO 105 - X12:2002)

Cleaning

Vacuum regularly. Professionally dry clean or wipe clean with a damp cloth.

Please note that seam performance is dependent on seam construction and needle and thread type. We recommend that appropriate sewing advice be taken.

Note: Batch to batch variations in shade may occur within commercial tolerances. We reserve the right to alter technical specifications without notice. The Unregistered Design Rights and the Copyright in all designs are the exclusive property of Camira Fabrics Limited.

D

Zusammensetzung

100% Schurwolle.
Nicht schwermetallhaltige Farbstoffe.

Umweltfreundlich

Schnell erneuerbar und kompostierbar

Breite

170cm nutzbare Breite

Gewicht

355g/m2 ±5% (605g/lfd.M ±5%)

Feuersicherung

BS 476 Part 7 Class 1
BS 476 Part 6 Class 0

Bemerkung: Schwerentflammbarkeit hängt von verwendetem Komponenten ab.

Lichtechtheit

5 (ISO 105 - B02:2014)

Reibechtheit

Nass: 4, Trocken: 4 (ISO 105 - X12:2002)

Reinigung

Regelmässig absaugen. Professionelle Trockenreinigung. Alternativ dazu mit einem feuchten Tuch abwischen.

Eine optimale Nahtausreissfestigkeit hängt von der Nahtfahne, der verwendeten Nadel und dem Näh-Garn ab. Wir empfehlen daher Nähversuche durchzuführen.

Wichtig: Handelsübliche Farbabweichungen können auftreten und berechtigen nicht zur Reklamation. Wir behalten uns die Änderung technischer Spezifikationen vor. Die registrierten und nicht registrierten Urheberrechte der Dessinierungen sind ausschliessliches Eigentum der Camira Fabrics Limited.

F

Composition

100% Laine Vierge.
Teintures non métalliques

Écologique

Rapidement renouvelable et compostable.

Largeur

170cm minimum

Poids

355g/m2 ±5% (605g/m.l ±5%)

Flammabilité

BS 476 Part 7 Class 1
BS 476 Part 6 Class 0

Notez: Réaction au feu dépend du composite utilisé.

Solidité à la lumière

5 (ISO 105 - B02:2014)

Solidité au Frottement

Mouillé: 4, Sec: 4 (ISO 105 - X12:2002)

Nettoyage

Aspirer régulièrement. Nettoyage à sec professionnel. Autrement, essuyer avec un tissu humide.

Veillez noter que la performance du joint dépend de sa construction ainsi que de l'aiguille et du type de fil utilisés.

Remarque: une variation de couleurs peut provenir (commerciallement tolérable). Nous réservons le droit de changer les spécifications techniques sans préavis. Les Droits de Conception non-enregistrés et les droits d'auteur de tous les motifs sont la propriété exclusive de Camira Fabrics Limited.

ES

Composición

100% Lana Virgen.
Tintes no metálicos

Ambiental

Rapidamente renovable y compostable.

Ancho

170cm mínimo

Peso

355g/m2 ±5% (605g/lin.m ±5%)

Inflamabilidad

BS 476 Part 7 Class 1
BS 476 Part 6 Class 0

Condiciones ignífugas depende de los componentes utilizados.

Solidez a la luz

5 (ISO 105 - B02:2014)

Solidez al rozamiento

Húmedo: 4, Seco: 4 (ISO 105 - X12:2002)

Limpieza

Limpiar con aspirador con regularidad. Limpiar en seco, o bien lavar con un paño húmedo.

Tenga en cuenta que el rendimiento de la costura depende de la construcción de la costura, además de la aguja y del tipo de rosca. Le recomendamos que se aconsejen para coser la costura.

Nota: las variaciones de lote a lote en la sombra se puede producir dentro de tolerancias comerciales. Nos reservamos el derecho a efectuar modificaciones técnicas sin previo aviso. Los derechos sobre los diseños no registrados y los derechos de autor en todos los diseños son propiedad exclusiva de Camira Fabrics Limited.

camira

style with substance

www.camirafabrics.com

Blazer Lite



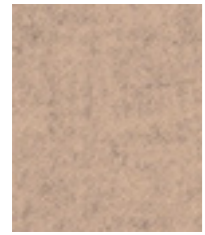
Panels



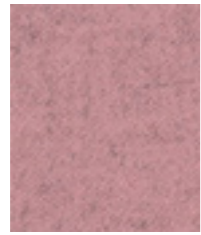
Environmental



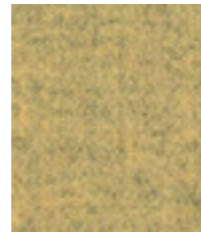
Year guarantee



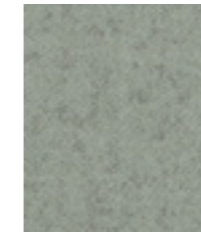
Daydream
LTH46



Love
LTH47



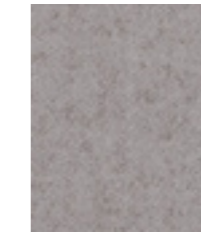
Bliss
LTH48



Pillow
LTH43



Harmony
LTH63



True
LTH61



Retreat
LTH39



Angel
LTH49



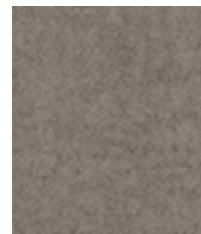
Hope
LTH50



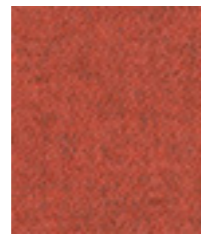
Graceful
LTH51



Dainty
LTH64



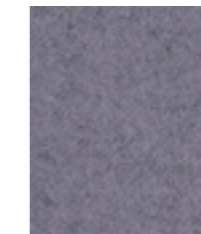
Tender
LTH53



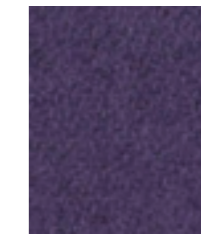
Aspire
LTH52



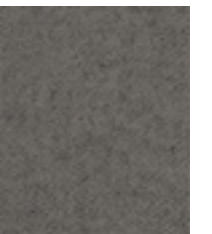
Balance
LTH41



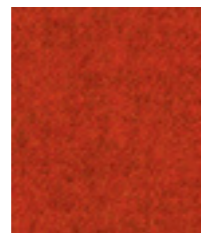
Pastel
LTH65



Faith
LTH68



Cuddle
LTH62



Praise
LTH54



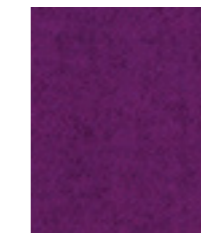
Buddha
LTH56



Happy
LTH55



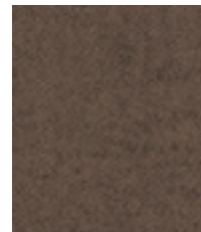
Wish
LTH67



Pamper
LTH66



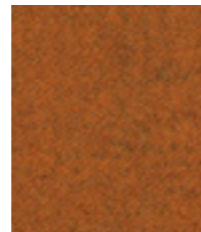
Solace
LTH70



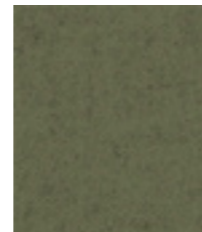
Verity
LTH57



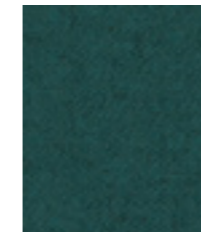
Devoted
LTH58



Worship
LTH59



Shelter
LTH60



Hush
LTH42



Mood
LTH44



Haven
LTH40



Freedom
LTH69